

Signing Up

To secure a share in the garden,
fill out this form and mail it, with
payment, to the address below.



Name: _____

Address: _____

City: _____

State: _____ Zip: _____

email: _____

Phone: _____

Share Info:

Full Share: \$680
Sliding Scale \$650 - \$710
Amount Paid _____

Half Share: \$365
Sliding Scale \$340 - \$390
Amount Paid _____

Preferred Pick-Up Day

Tuesday: on-farm pick-up

Friday: on-farm pick-up

Monday: Rockland pick-up (*limited, sign up early*)

Signature: _____

Date: _____

Please send this form with your payment.



Tom Griffin, Hopes Edge Farm
73 Morse Rd., Hope, Maine 04847
tom@hopesedgefarm.com • 207.542.4097
www.hopesedgefarm.com

Selected Comments



*Coming to the farm is the highlight of my week...cows grazing,
farmers at work, children playing — life in action.*

*Being part of the CSA...reminds us of where our food comes
from, the hard work and stewardship that growing food
requires and the sense of community it fosters.*

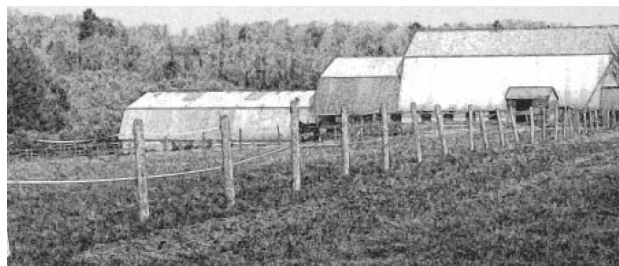
*I can't imagine a better way to acquire such amazing food
except by growing it myself.*

*...we value [this experience] for what it teaches our kids about
the natural connections between food, the land and the people
who grow it.*

...very peaceful, fulfilling and nourishing...

*The ultimate goal of farming is not the growing of
crops but the cultivation and perfection of the
human being.*

— MASANOBU FUKUOKA

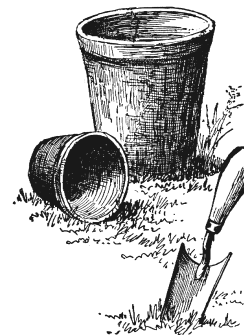


Community Supported Agriculture

HOPE'S EDGE FARM
HOPE, MAINE



Celebrating Our Twelfth Season



Community Supported Agriculture

HOPE'S EDGE FARM HOPE, MAINE



In Japan where the concept of Community Supported Agriculture (CSA) was first conceived, the word used to describe it is "teikei". The literal translation of "teikei" is "relationship" or "partnership". its philosophical translation, however, is "food with the farmer's face". This translation becomes clear when one begins to understand that CSA's offer both consumer and grower the opportunity to reconnect with one another, and in doing so redevelop relationships around the root of all culture: food.



About Hope's Edge Farm

Comprised of 100 acres of open fields and mixed woodlands, Hope's Edge Farm is located in Northwest Hope. Historically this land was home to three generations of the Morse family who, up until the mid 1980's, ran one of the preeminent dairy farms in the region. In 1997 Holly Miller purchased the land and soon recognized that the land needed more attention than she was able to give it. In 2002 she invited me to lease some of the land and buildings in order to make it once again a working farm. This agreement between Holly and I marked the birth of Hope's Edge CSA making this 2013 season our 12th. Although not organically certified, we at Hope's Edge Farm are committed to growing without the use of agricultural chemicals. In addition we have been using Biodynamic farming methods since our inception.

What does it mean to be a shareholder?



As a member of Hope's Edge CSA you will be purchasing a share of the harvest. By paying for you share in advance, you are underwriting the harvest for the entire season and are entitled to a weekly share of the local, fresh, seasonal, unadulterated produce. As the farmers, it is our responsibility to work with nature to provide a beautiful and bountiful harvest. Nature, however, can be fickle and in a season of weather extremes even our best efforts may be hampered. Therefore, by purchasing a share, you not only share in the bounty but also share in the risk. Having said this, however, under "normal" weather conditions there is much to share.

Pick-up Options & Cost



Our season runs for 18 weeks beginning the third week of June and ending at the third week in October. On-farm pick-up days are Tuesday or Friday. Pick-up hours are flexible. We also offer a Monday option with delivery to Rockland. *(Note: the number of Monday shares is limited. Please sign up early.)* We offer two share sizes: a HALF SHARE option intended to feed two adults and a child or a FULL SHARE for larger families or veggie lovers. Share prices are listed on the attached sign-up form. We do offer a limited sliding scale fee and we can accommodate payment arrangements to fit your budget.



Product	Qty	June	July	Aug	Sep	Oct
basil	1 lb					
beans,snap	10 lb					
beans, fava	1 lb					
beans, edamame	1/2 lb					
beets w/greens	5 bunchs					
broccoli	6 lb					
cabbage, green	3 hd					
cabbage, red	1 hd					
cabbage,chinese	1-2 hd					
carrots	20 lb					
cauliflower	1-3 lb					
celeriac root	4 cnt					
chard	15 lb					
cucumbers	20 cnt					
eggplant	3 lb					
fennel bulb	4 cnt					
flowers	pyo					
garlic	2-3 lb					
garlic scapes	60					
herbs, assorted	10 bnch					
kale	15 lb					
kohlrabi	6 cnt					
leeks	2-4 lb					
lettuce	36 hd					
melons	4 cnt					
mesclun greens	3 lb					
onions	20 lb					
pac choy	1-2 hd					
peas, shell	pyo					
peas,snap	2-4 lb					
peas,snow	1-3 lb					
peppers	2-4 lb					
potatoes	35 lb					
radish	4 bnch					
rutabaga	4 lb					
scallions	6 bnch					
spinach	5 lb					
squash,summer	8-10 lb					
squash,winter	35-45 lb					
strawberries	pyo					
sweet corn	2 doz					
tatsoi	1-2 hd					
tomatoes	30 lb					
tomatoes, cherry	pyo					